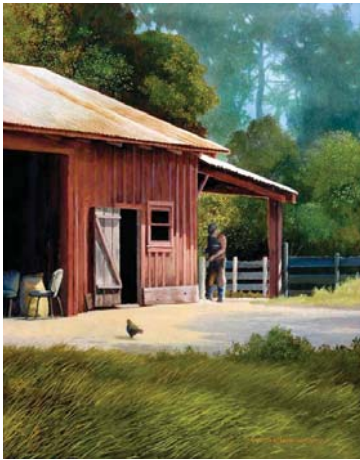


Map to the paintings of Curtis Wilson Cost p.2



Just .1 mile more on the right, ...or .9 from the reset, you'll see **The Farrier**.

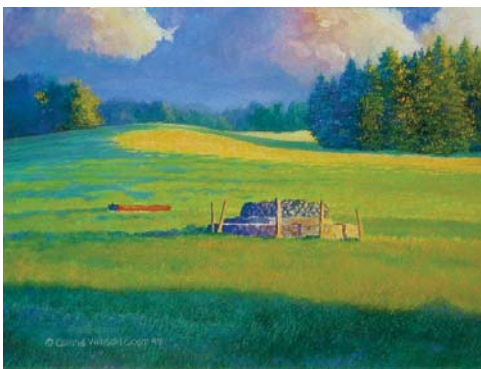


Cow and the Calf

Now it's time to do a u-turn, bearing right on Hanamu Road.

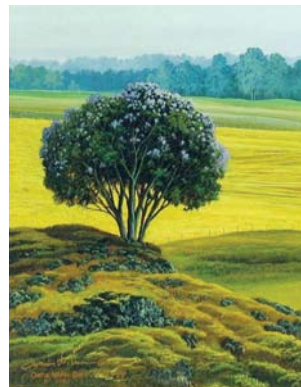
...at 1.3 from the reset, you'll come to a widening pasture on the left. This is the site of **Cow and a Calf**. (It was painted in the middle of the pasture, in the rain, no less)

The Farrier



Cistern

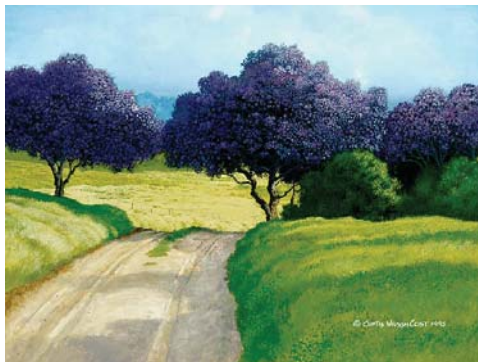
Turn left. up hwy 377. Watch for fast moving vehicles. At 1.4 you'll see an old cistern in the middle of the hill on the left.



Old Jac

At 4.4 miles Old Jac shows up as the first in a long tunnel of Jacaranda trees.

As you enter them you'll see ***Lavender Passage***.



Lavender Passage

At 5.7, the last stop is our destination, the Kula Lodge and Restaurant, home of ***The Curtis Wilson Cost Gallery***.

Thanks for joining us.